

# ECOCHLOR BALLAST WATER TREATMENT



USCG Type Approved

Energy Efficient

Crew Friendly

Small Footprint

Hazardous Zone Options

**Inc.  
5000**

Ecochlor is listed in the top 10% of Inc. 5000 Award for the fastest-growing private companies in U.S.

## 14 Years of Proven Technology

The unique, patented technology provides installation advantages in placement flexibility and scalability, and ongoing operating advantages in efficiency and energy savings.

The system simply works. It is rugged. It lasts. We have had systems in operation since 2004. Shipowners and crews have been pleased with the technical performance and operational efficiencies of these systems for over 14 years.

## Technology: Unaffected by Salinity, Temperature, Organics

The Ecochlor® BWTS uses chlorine dioxide (ClO<sub>2</sub>) for disinfection, a water treatment technology that has been proven effective over 70 years in land-based applications. The technology is not affected by water salinity, turbidity, organics or temperature (operating in temperatures as low as 0°C). This system gives you the reliable performance you need for global shipping.

## One and Done: No Neutralization or Treatment at Discharge

Quickly and effectively kill invasive species that can harm your ports of entry and coastal ecosystems. Unlike other systems, the Ecochlor® BWTS kills aquatic invasive species immediately – there is no need to treat again or neutralize during ballast water discharge.

## Retrofit Ready: Small Footprint with Flexible, Modular Installation

The Ecochlor® BWTS offers the small footprint and modularity needed to optimize available space. The generator and tanks can be placed in any convenient location on a ship. The filtration system is typically located in close proximity to the ballast pumps, and can be placed in a horizontal or vertical configuration for system placement.

## Ideal for Mid-size to the Largest Bulkers and Tankers

The Ecochlor® BWTS scales well for mid-sized to the largest tankers in the world. System design options are available for vessels with hazardous areas.

## A Rugged System that Meets or Exceeds the Most Demanding Regulations

Our systems have both USCG and IMO Type Approval, demonstrating that our technology can meet, and in many cases exceed, the most demanding regulations. In August 2017, Ecochlor became the first BWTS with chlorine dioxide treatment technology to receive USCG Type Approval. This approval expanded shipowners' options for USCG compliant treatment system technologies beyond UV and electrochlorination.

Ecochlor's USCG Type Approval offers: almost twice the flow capacity of any other approved technology; an approved system for high flow rate on US flagged tanker installations; and, the only approved BWTS that does not require re-treatment or neutralization on discharge.

## Operationally Efficient: Low Energy Consumption, Automated, Crew-Friendly

The energy required to power the Ecochlor® BWTS is negligible in comparison to other ballast water treatment systems. Operation is simple and straightforward with an intuitive control panel. For the crew, there is no chemical handling.

Rigorous studies have demonstrated that treatment with the Ecochlor® BWTS will not affect ballast tank coatings.

## Support for the Long Haul

It isn't just the system, unique technology and engineering – it's the support provided before and after as well as during installation that sets us apart from the competition. We have a worldwide network of maritime engineers, partners and associates here: to serve; to consult; to conduct feasibility studies; to install systems; and to provide ongoing service and support.

**Our mission:** To help you protect our coastal ecosystems and meet regulatory requirements in the most effective and efficient way, now, 14 years from now, and longer.

For more information go to [www.ecochlor.com](http://www.ecochlor.com)

# ECOCHLOR® BALLAST WATER TREATMENT SYSTEM

## TOUGH, MODULAR, SCALABLE



### ClO<sub>2</sub> Generator: Unique Technology

The heart of our treatment system: a chlorine dioxide generator that delivers a dilute solution of chlorine dioxide to treat incoming ballast water. The fully automated, compact generator has few moving parts and is the same physical size for all sizes of systems. It works simply: a small amount of supply water from the ship flows through an eductor which creates a vacuum in the mixing chamber. Once the vacuum has been created, two precursor chemicals flow into the chamber; the supply water becomes a solution of chlorine dioxide that is sent to the main ballast water line.

### Scalable: Sized to Ship and Ballast Water Needs

The ClO<sub>2</sub> Treatment System includes the ClO<sub>2</sub> generator, self-contained chemical storage tanks, associated piping and automated PLC controls. The system is easily scalable for different sizes of ships and ballast volumes. Larger systems are particularly space efficient with ten times the capacity for less than twice the footprint.



Series 100 Model: ET-500-1.5  
Capacity: 500 m<sup>3</sup>/hr, Tank Size: 1.5 m<sup>3</sup>



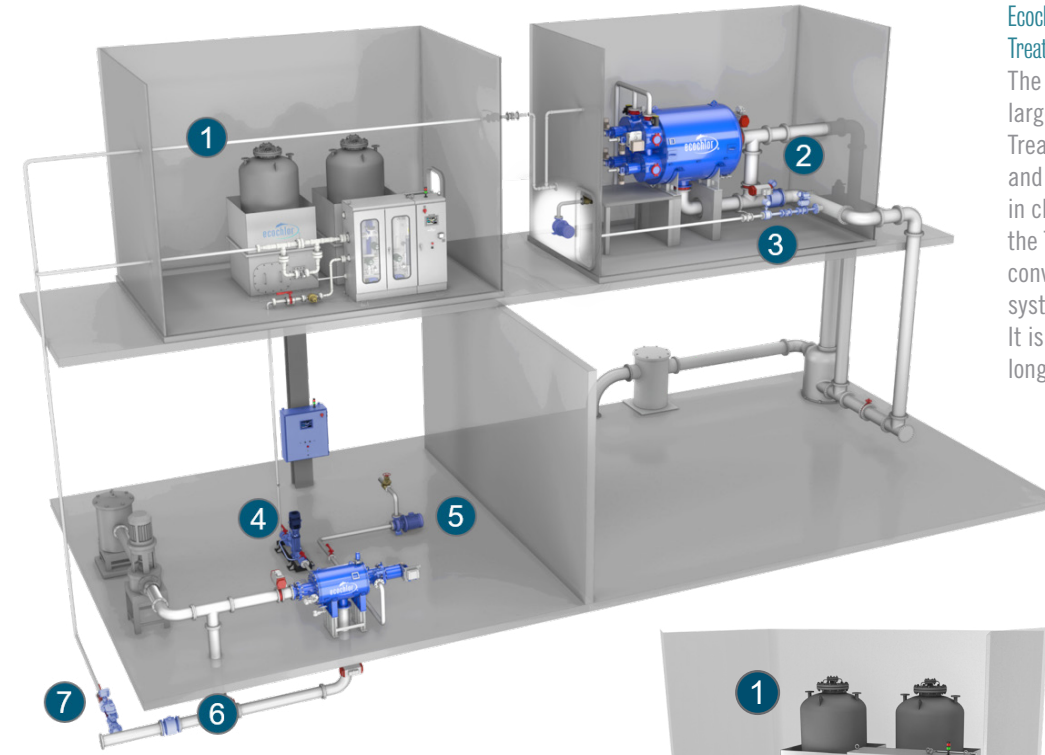
Series 150 Model: ET-1500-2.5  
Capacity: 1,500 m<sup>3</sup>/hr, Tank Size: 2.5 m<sup>3</sup>



Series 200 Model: ET-3000-3.5  
Capacity: 3,000 m<sup>3</sup>/hr, Tank Size: 3.5 m<sup>3</sup>



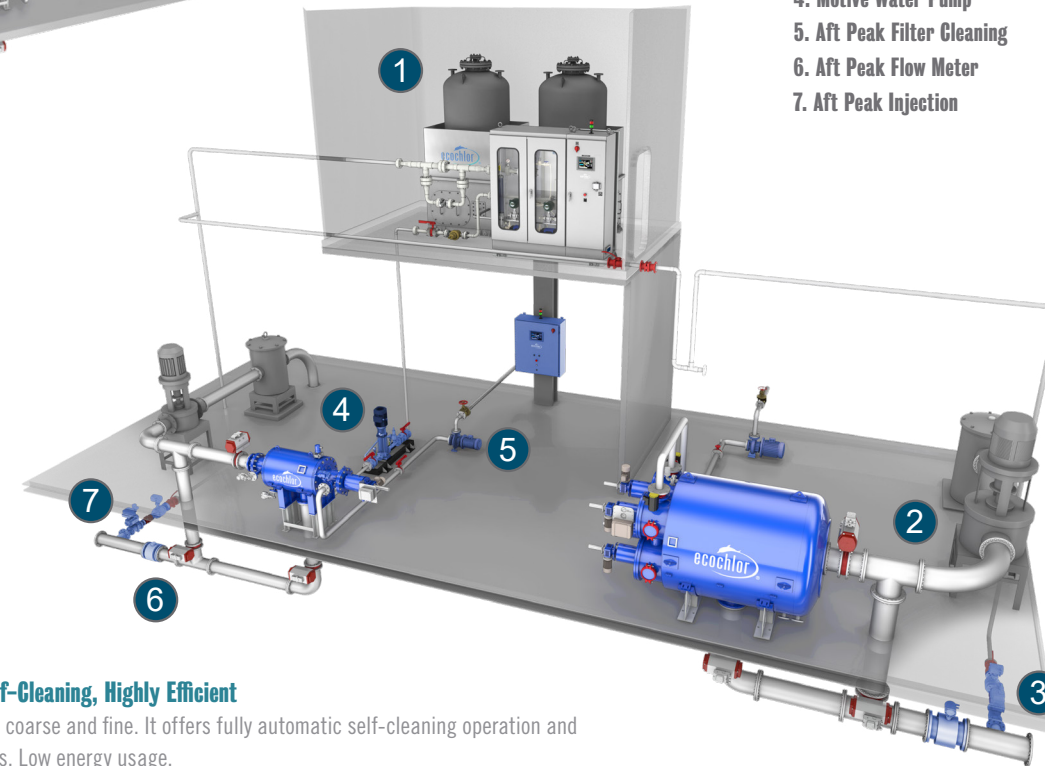
Series 250 Model: ET-5000-5.0  
Capacity: 5,000 m<sup>3</sup>/hr, Tank Size: 5.0 m<sup>3</sup>



### Ecochlor® Ballast Water Treatment System: Filtration and Treatment

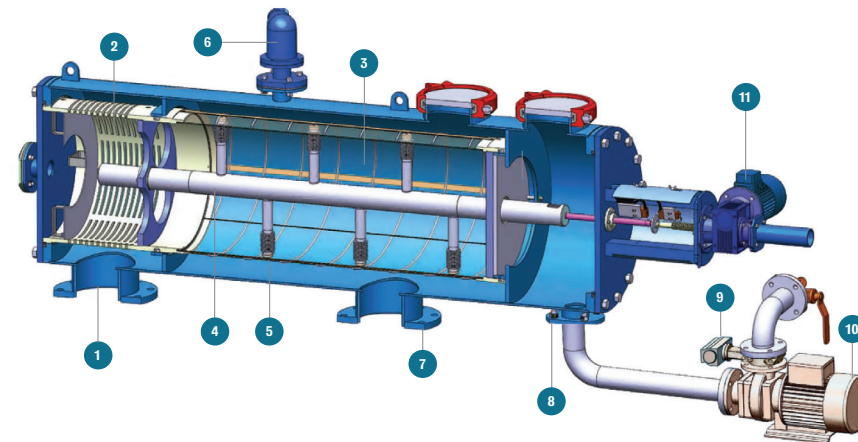
The Filtration System removes sediments and larger organisms and the Chlorine Dioxide Treatment System eliminates smaller organisms and pathogens. The Filtration System is placed in close proximity to the ballast water pumps; the Treatment System can be placed in any convenient location on the ship. The automated system is crew-friendly and simple to operate. It is very energy efficient and is engineered for long life.

1. Treatment Deckhouse
2. Main Ballast Flow
3. Main Ballast Injection
4. Motive Water Pump
5. Aft Peak Filter Cleaning
6. Aft Peak Flow Meter
7. Aft Peak Injection



### Filtration System: Rugged, Self-Cleaning, Highly Efficient

Includes two stages of filtration: coarse and fine. It offers fully automatic self-cleaning operation and can handle heavy sediment loads. Low energy usage.



1. Inlet
2. Primary Coarse Screen
3. Weave-wire screen
4. Suction Scanner
5. Proximity Nozzles
6. Air Release Valve
7. Outlet
8. Flush Water Discharge Outlet
9. Flush Valve
10. Suction Pump
11. Worm Gear and Motor

## NEW BUILDS AND RETROFITS: HIGHLY FLEXIBLE, MODULAR INSTALLATION



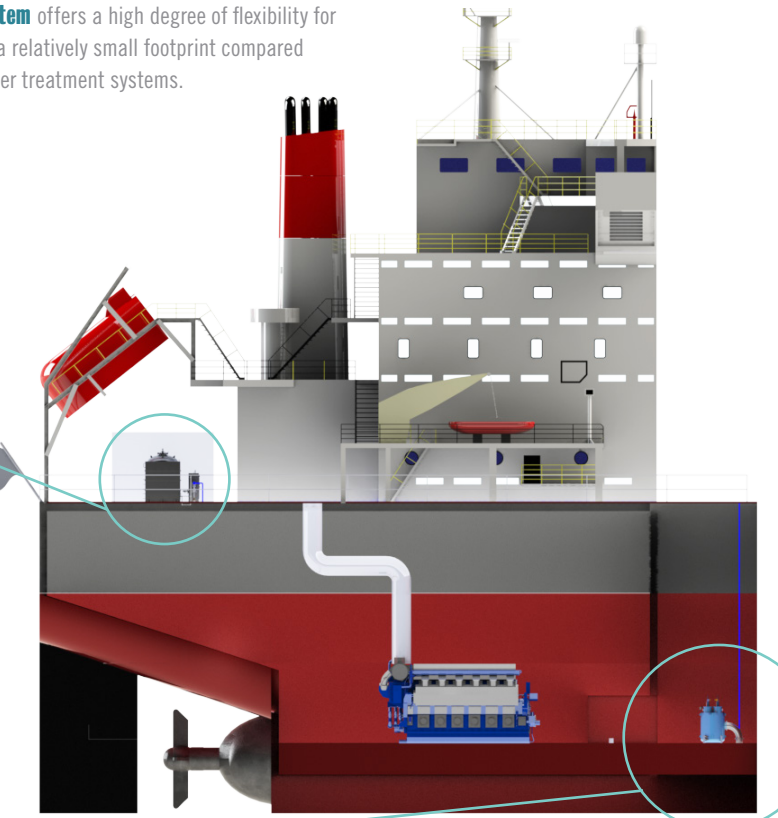
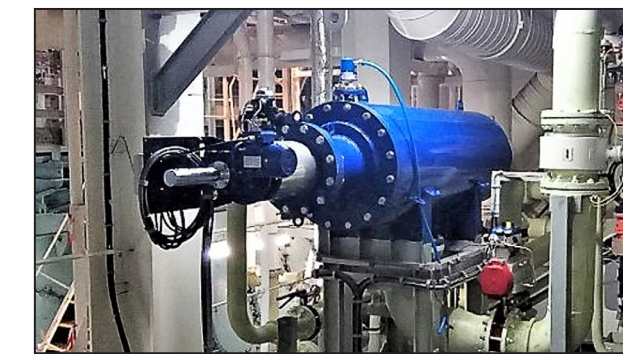
“Even though our system is relatively simplistic, our experienced installation team works at the dry dock alongside the shipyard, shipowner’s superintendent, engineering integrator and the vessel’s crew to ensure that the ballast water treatment system is retrofitted properly and operating effectively at commissioning. Our company philosophy is that the sale and installation of an Ecochlor System initiates a relationship with the shipowner and operator that will last for the life of the vessel, and this cooperative relationship begins at the installation.”

Tom Perlich, founder and president of Ecochlor



The Ecochlor® System offers a high degree of flexibility for installation. It has a relatively small footprint compared to other ballast water treatment systems.

The ClO<sub>2</sub> Treatment System can be located in any convenient part of the ship. The system itself is modular to further optimize space.

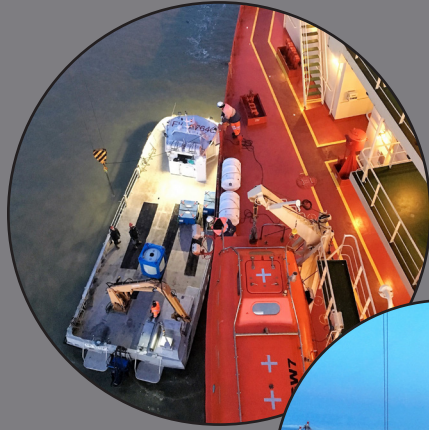


Only the Filtration System needs to be installed in close proximity to the ballast water pumps. The filters can be installed horizontally or vertically and are configured to match the ship size and ballast water volume.

# Ecochlor® BWTS Power Consumption

ECOCHLOR Series	FLOW RATES (m³)	POWER (kW)	
		Typical <sup>(1)</sup>	Maximum <sup>(2)</sup>
75	200 - 400	4.9	10.1
100	400 - 1000	5.6	14.6
150	1000 - 3000	7.2	23.9
200	3000 - 6000	10.5	40.9
250	6000 - 10,000	13.6	58.8
300	10,000+	TBD	TBD

Power requirements include filter(s), filter suction, cleaning pump, generator, control panel and motive water booster pump.  
<sup>(1)</sup>Based on normal operation of filter cleaning every 15 minutes.  
<sup>(2)</sup>Based on continuous filter cleaning.



## After the Installation

The sale and installation of an Ecochlor Ballast Water Treatment System (BWTS) begins a relationship with the owner, operator and crew that will last for the life of the vessel. Through our Technical Service Agreement, an authorized Ecochlor representative will resupply the chemicals approximately every six months. During the chemical resupply process, there is very little crew involvement. The Ecochlor Service team has collaborated with Drew Marine to assist in providing logistics and technical support for resupply of the precursor chemicals at ports and harbors around the world.

Ecochlor has an established international Customer Service Call Center that is available 24/7 for other service needs. Crew training can be done on the vessel's computer using the Ecochlor interactive training program that is available in varying levels of detail for the deck crew, engineering staff, chief engineer and chief officer, based on their level of responsibility for the system.



USCG Type Approval



IMO G9 Active Substance Approved



IMO G8 NMO Norway

Ecochlor's attainment of global regulatory type approvals, including IMO, USCG, class and flag societies, highlights our perseverance in bringing a quality, effective BWTS to market in the marine industry and our continued commitment to working with shipowners to assist them in having BWT compliant fleets and/or individual vessels.



IMO Type Approved Liberian Ship Registry



IMO Type Approved Cyprus Ship Registry



ABS Type Approved



BV Type Approved



LR Type Approved



NK Type Approved



RMRS Type Approved



Ecochlor, Inc.  
 14 Nason Street, Suite 309  
 Maynard, Massachusetts 01754  
 +1 978 298 1463  
 sales@ecochlor.com

Ecochlor Cyprus  
 P.O. Box 59720  
 CY-4012, Limassol Cyprus  
 +357 96 689945  
 ecochlorcyprus@ecochlor.com

Ecochlor® is a registered trademark of Ecochlor, Inc. Purate™ is a trademark of Ecolab/Nalco. Ecochlor® Systems are patented in the US (6,773,611) & internationally. Copyright © 2018 Ecochlor, Inc. All rights reserved.